



# 2024 Franklin County Profile

## Highways



Pennsylvania  
Turnpike



Extensive network of state owned/  
maintained roadways

## Rail



Norfolk Southern Franklin County Regional  
Intermodal Terminal (PA Exit 3, I-81)



CSX Intermodal Terminal  
(PA Exit 14, I-81)



Pennsylvania & Southern Rail  
(short line service within  
the Cumberland Valley  
Business Park)



The Railroad Associates Corporation, TRAC (short  
line service within the Chambers-5 Business Park)

## Air

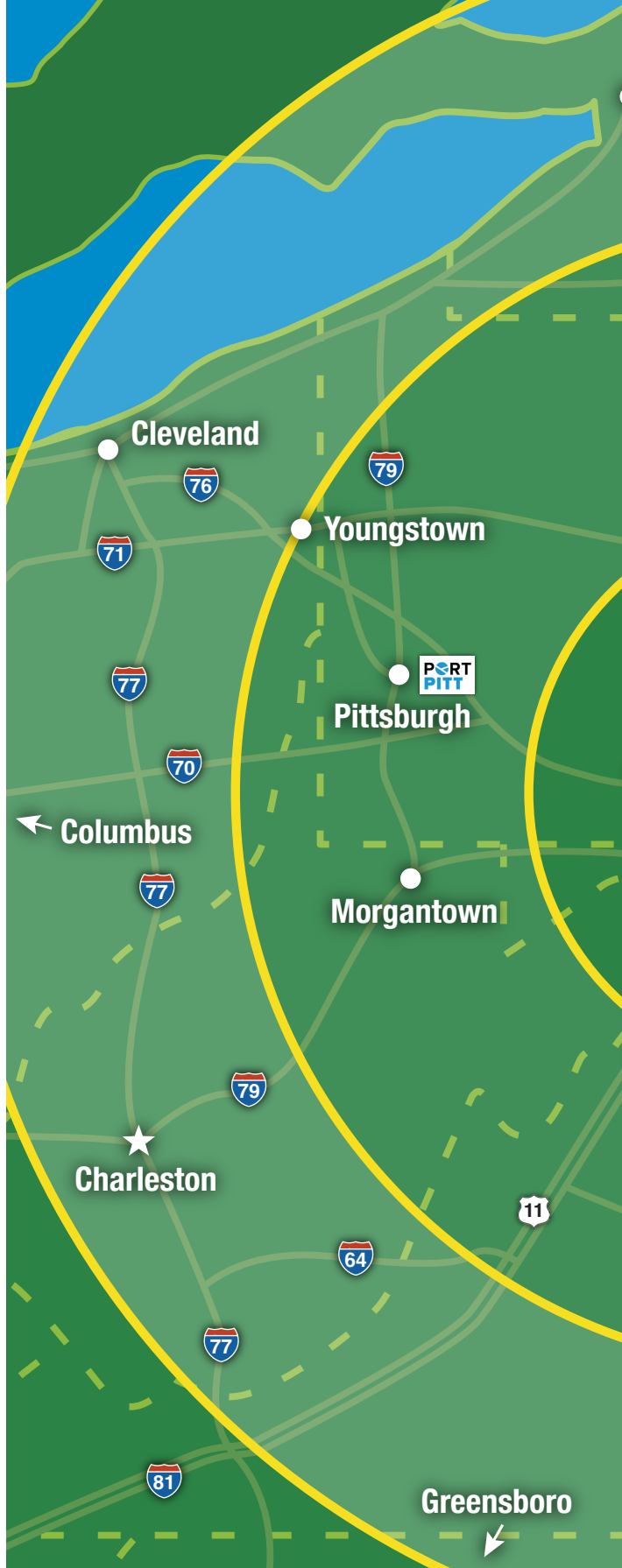


HAGERSTOWN  
REGIONAL AIRPORT  
Washington County, MD

General Aviation



## Water



# Location, Access, and Infrastructure...

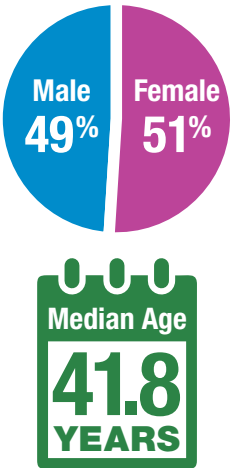
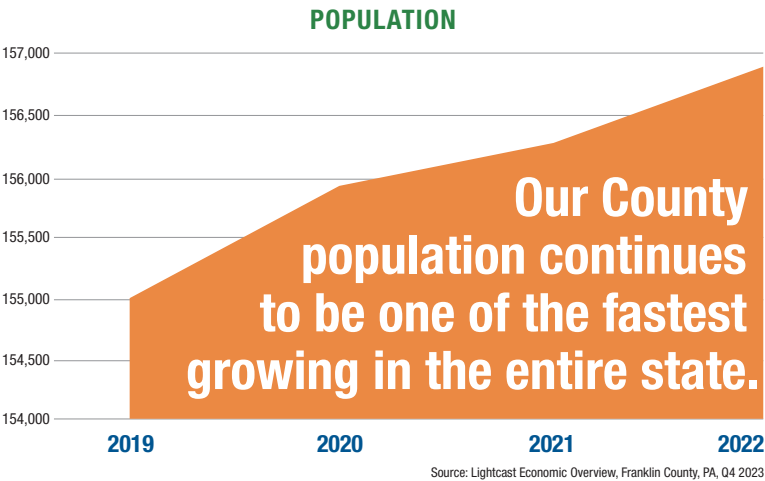


One of Franklin County's greatest assets is its **location and easy access** to substantial and growing industrial and consumer markets. We are situated on one of the most heavily travelled Interstates in the Country and are within one day's drive of more than **50%** of the *North American* population.

To plan for the future, in 2023 the Franklin County Municipalities Planning Organization completed a 2045 Long Range Transportation Plan and an I-81 Improvement Prioritization Plan.

# Socio-Economic Profile

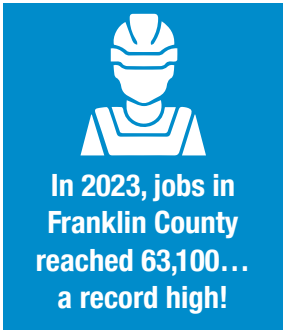
## Demographics



## Skilled Talent

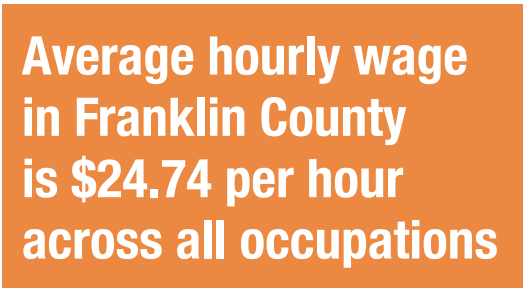
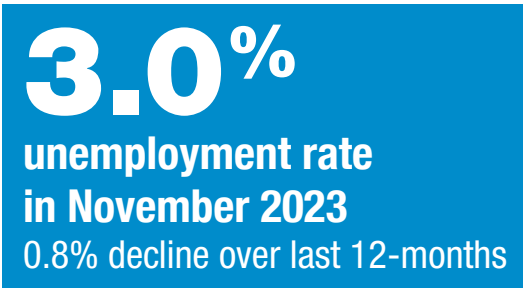
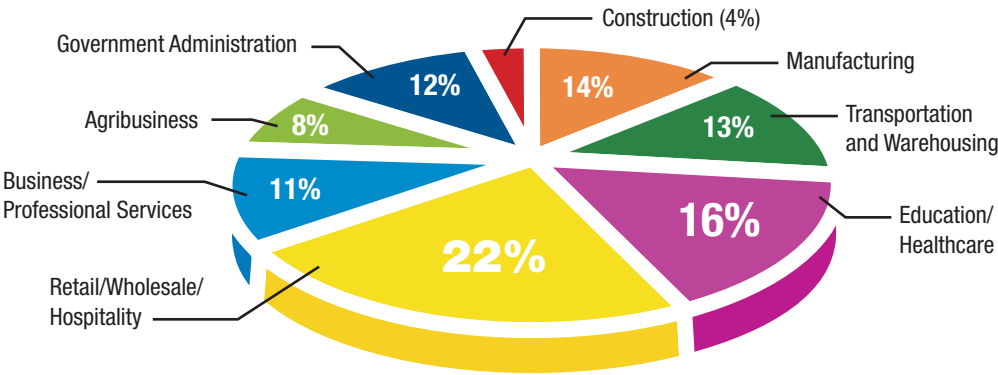
Franklin County’s prime location along Interstate 81 is critical to attracting skilled talent from the Quad-State Region of Maryland, West Virginia, and Virginia, as well as other counties throughout southcentral, PA. The region boasts a civilian labor force of more than **625,000** highly skilled and dependable workers within 50 miles of the heart of Franklin County!

Source: US Bureau of Labor Statistics, Labor Force Data by County, December 2023



## Economic Snapshot

We like to mix-it-up...Franklin County boasts an extremely **diversified economy**.



Source: PA Department of Labor and Industry, Workforce Information News Release, Chambersburg-Waynesboro MSA, December 2023

Source: PA Department of Labor and Industry, Center for Workforce Information and Analysis, Franklin County Profile December 2023

# Major Employers

Some of the most recognized companies in the world call Franklin County home.

2024 Employment		2024 Employment	
WellSpan (Franklin County)	3,650	Ulta Distribution	850
Letterkenny Army Depot	2,260	Volvo Construction Equipment	785
Chambersburg Area School District	1,225	Procter & Gamble	775
Manitowoc	1,200	Waynesboro School District	758
Target DC # 589	964	Martin's Famous Pastry Shoppe	733

Employment is approximate and subject to change. Prepared by the FCADC, January 2024



There are more than 3,300 registered businesses in Franklin County

By the Numbers


- Franklin County's world class manufacturers contributed nearly \$1.3 Billion of County GDP in 2023... the most of any sector.
- Healthcare contributed nearly \$900 Million.
- TOTAL GDP was \$7.5 Billion in 2023 across all sectors.

There is nearly 24 Million square feet of logistics space in Franklin County.  
In 2007, Franklin County had 8+ Million.



Year	Square Feet in Millions
2007	8+
2024	24

Source: Lightcast Economic Modeling Q4 2023 Data Set, December 2023



Agribusiness continues to be a major component of Franklin County's economy.

The County ranks 2nd in the state for the production of milk, cattle, apples, peaches, and corn for silage.



To date more than **18,900 acres** of production ag land and **149 family farms** have been preserved for future generations.

By the Numbers

- Franklin County ranks 10th in acres preserved in PA
- There are nearly 1,500 family farms in Franklin County.



40% of county land is in crops... ranking #2 in the state.

Franklin County is a great place to work, live, and play

Education

To build the talent that growing businesses need, Franklin County provides a broad spectrum of quality educational opportunities. Options range from pre-school through post-secondary.

6 Public school districts

CareerTech

Post Secondary Institutions serving Franklin County include:



ship.edu



wilson.edu



PennState  
Mont Alto

montalto.psu.edu



triangle-tech.edu

Healthcare

Our healthcare is focused on Patient Care.



wellspan.org



keystonehealth.org



upmc.com

Housing

Franklin County offers an expanding range of affordable housing opportunities

By the  
Numbers

**\$222,000** Median Home Value

**67,078** total estimated housing units with 73% owner occupied

**\$1,557** Average Monthly Housing Ownership Costs (with mortgage)

**\$1,019** Average Gross Rental Costs

Median Household  
income

**\$71,808**

There were **288** new residential development lots created in Franklin County in 2023.



# Taxes

Pennsylvania does **NOT** levy a tax on inventory, tangible personal property, machinery, or equipment. Additionally, machinery and equipment used directly in the manufacturing process is exempt from state sales tax.

The following is a summary of the most common business taxes.



### Personal Income Tax (PIT)

The current rate is 3.07%



### Corporate Net Income Tax (CNI)

The current rate is 8.49%.

.05% reduction for each  
subsequent year until  
the rate reaches 4.99%...  
the 9th lowest in the  
Country.



### Sales & Use (SUT) Tax

The current SUT is 6.0%

# Tourism

Tourism is a major component of the Franklin County economy.



More than 500,000 people visit the County annually.

The visits result in  
a direct economic  
**impact of**  
**\$338 Million**  
and...

...support  
**1,850**  
HOTEL ROOMS  
*and over*  
**2,600**  
hospitality  
jobs.



1900 Wayne Road  
Chambersburg, PA 17202

717.263.8282  
717.263.0662 fax

[fcadc.com](http://fcadc.com)