

Franklin County Area Development Corporation

Name: United Business Park, Plasterer Site

Availability: Immediate

Location: Interstate 81, PA Exit 24

County: Franklin

Borough/Township: Southampton

Acres: 50

Zoning: Industrial

Price Per Acre: Negotiable (\$60,000-\$80,000)

Description: Generally flat farmland with excellent highway access

Highways: Immediate access to PA Route 696, adjacent to I-81, PA Exit 24

Electricity: Adams Electric

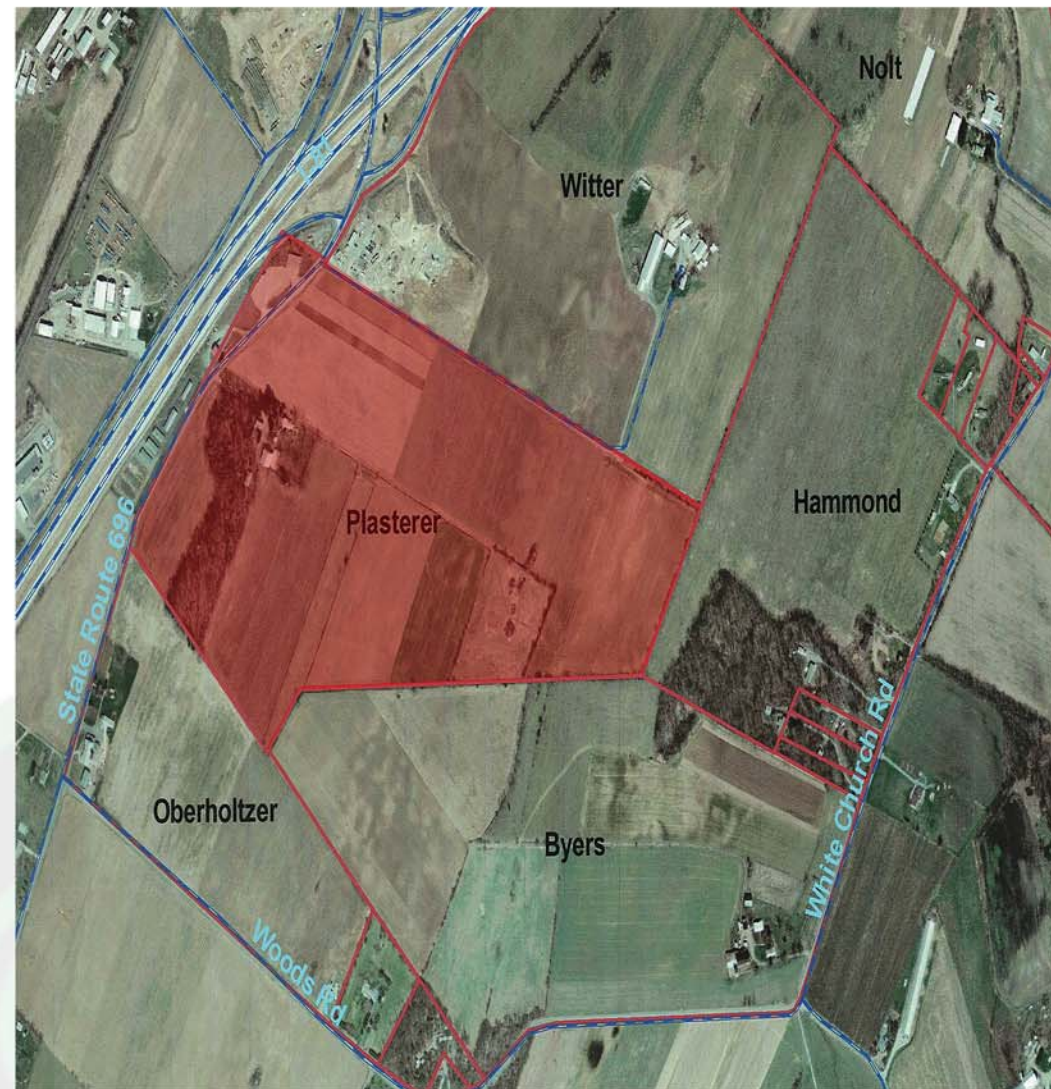
Gas: PPL Gas Utilities

Water Supplier: Shippensburg Borough Authority

Sewer Supplier: Cumberland Franklin Joint Municipal Authority

Contact: David G. Sciamanna, Executive Director, Cumberland Valley Regional Development Corporation

Phone/email: (717) 263-7101, dsciamanna@chambersburg.org



FCADC 1900 Wayne Road, Chambersburg, PA 17202
(717).263.8282 (717).263.0662 fax www.fcadc.com