

Lesher Farm Parcel

Chambersburg, PA

Availability:	Immediate
County:	Franklin
Municipality:	Guilford Township
Zoning:	Industrial
Acreage:	Multiple Parcels
	<ul style="list-style-type: none">• Parcel 1: 52 acres• Parcel 2: 40 acres• Parcel 3: 30 acres (rail served)
Description:	Flat to gently rolling farmland
Natural Gas:	Columbia Gas
Electricity:	First Energy
Public Sewer:	Guilford Township
Public Water:	Guilford Township
Highways:	Within 1 mile of Interstate 81, Pa Exit 14 Immediate access to US Route 11
Rail:	Borders Norfolk Southern Mainline Within 1/4 mile of CSX Intermodal Terminal
Misc:	Parcels 1 & 2 have I-81 frontage
Contact:	Ryan Johnston, WCN Properties (717) 264-3700 ryanj@franklinstorage.com

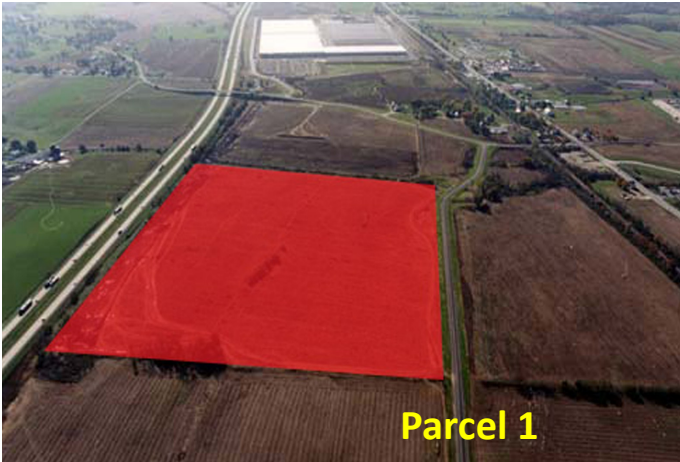


1900 Wayne Road
Chambersburg, PA 17202
(717) 263-8282 ph.
(717) 263-0662 fax
www.fcadc.com

CHAMBERSBURG

Lesher Farm Parcel

Chambersburg, PA



1900 Wayne Road
Chambersburg, PA 17202
(717) 263-8282 ph.
(717) 263-0662 fax
www.fcadc.com

CHAMBERSBURG